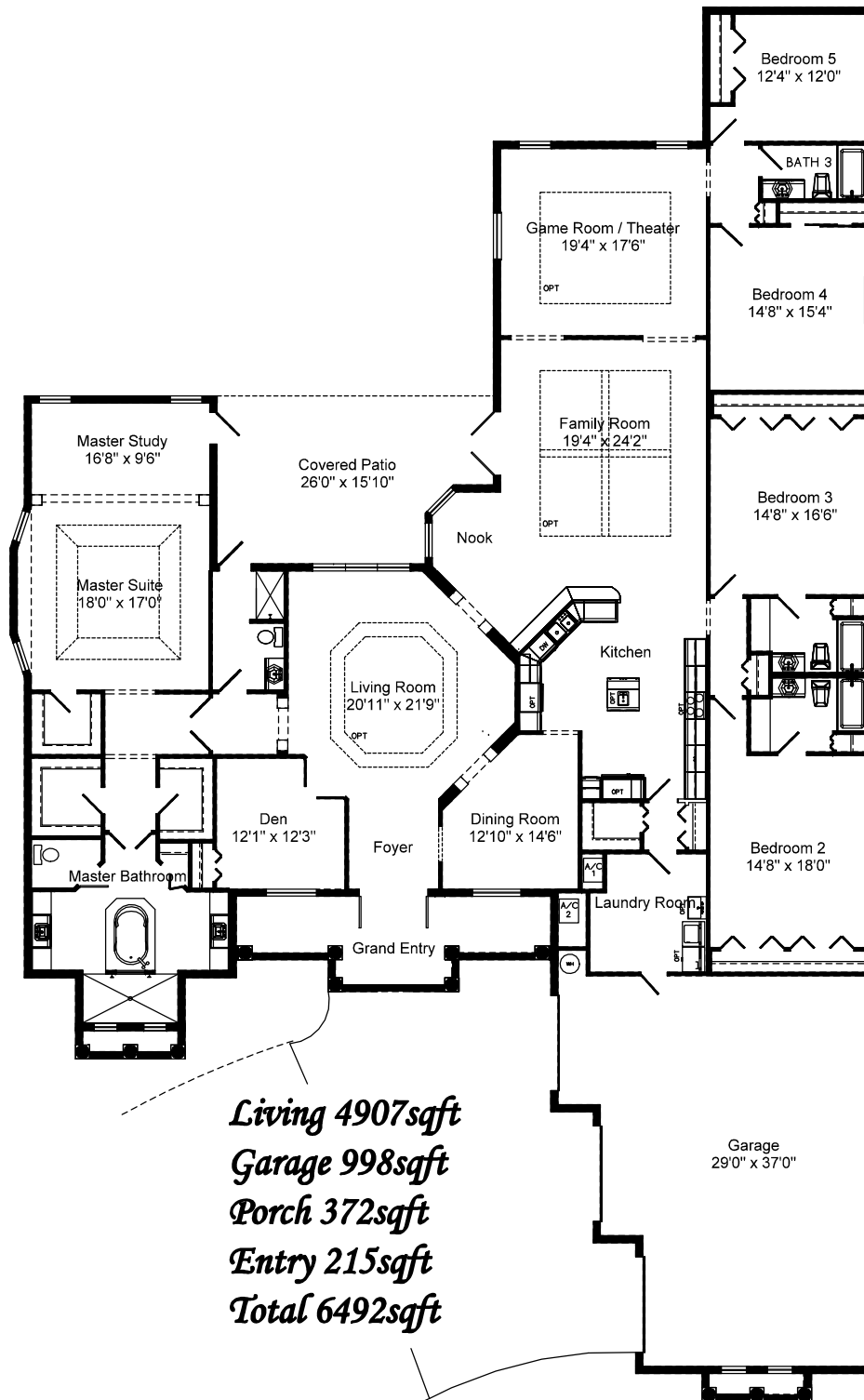


Estate Series

Palm Beach VII



*Living 4907sqft
Garage 998sqft
Porch 372sqft
Entry 215sqft
Total 6492sqft*



**Mike Munz
Construction, Inc.**
CGC037714 CPC053906 CCC056805

Visit our Model Home at:
5061 Royal Palm Beach Blvd.
West Palm Beach, FL 33411
(561) 790-3662 Fax (561) 790-5698
National Sales 1-888-Mike Munz
www.mikemunz.com

Copyright Mike Munz Construction, Inc.
This brochure is for illustrative purposes only and not part of a legal contract.
Floor plans, dimensions, specifications and price are subject to change
without notice. Room sizes are approximate.