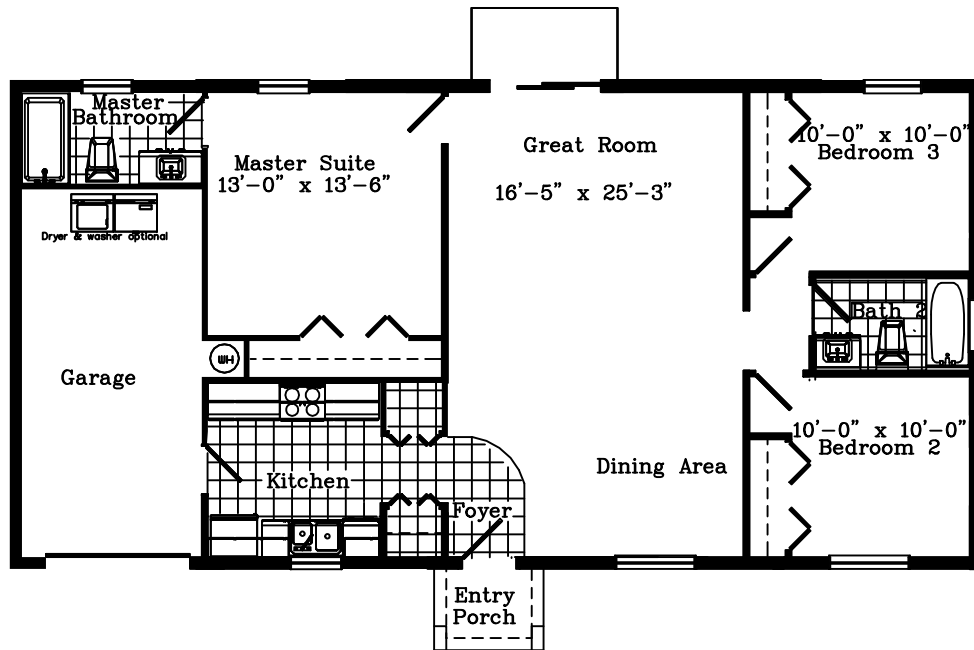


The Floridian

321-1241



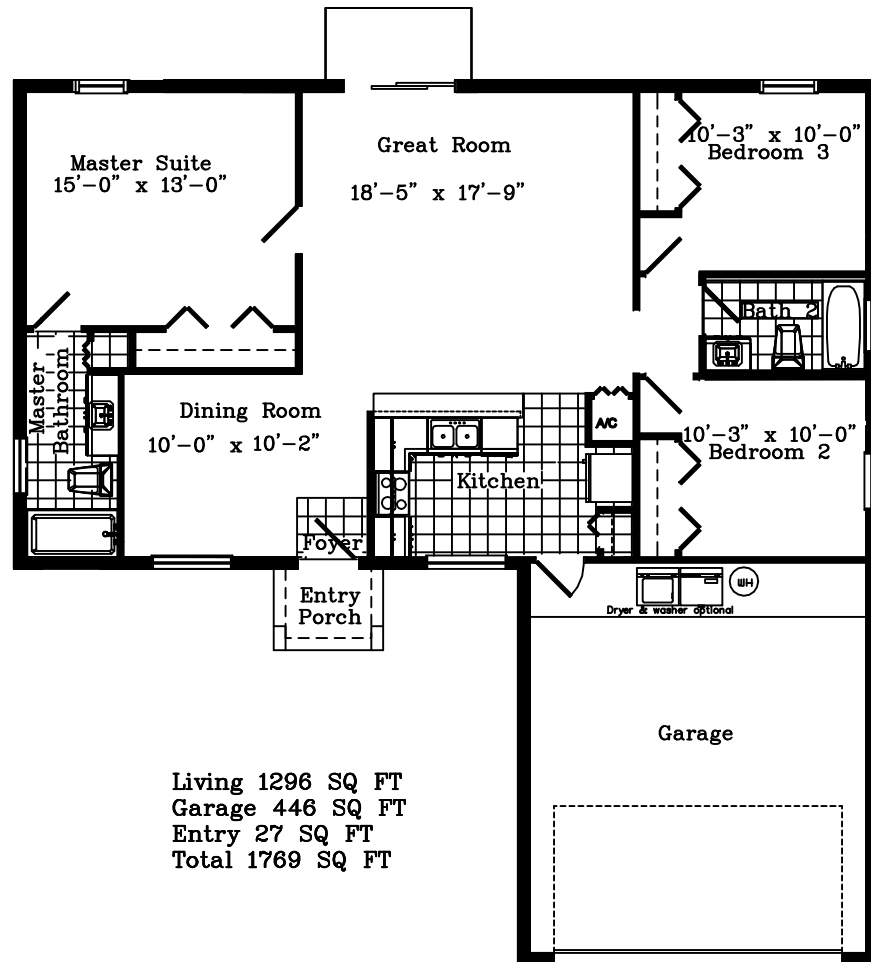
Living 1241 SQ FT
Garage 224 SQ FT
Entry 27 SQ FT
Total 1492 SQ FT

Copyright Mike Munz Construction, Inc.
This brochure is for illustrative purposes only and not part
of a legal contract. Floor plans, dimensions, specifications
and price are subject to change without notice.
Room sizes are approximate.

www.mikemunz.com



**Mike Munz
Construction, Inc.**
CGC037714 CPC053906 CCC056805

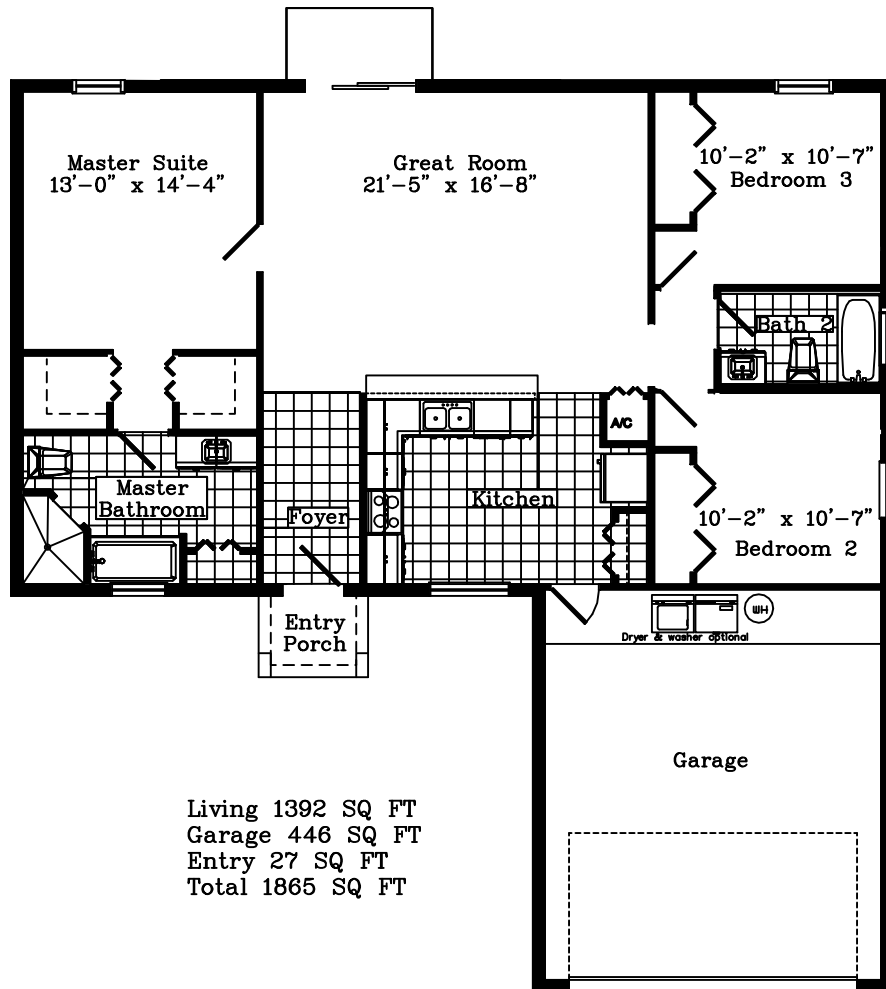


Living 1296 SQ FT
Garage 446 SQ FT
Entry 27 SQ FT
Total 1769 SQ FT



The Floridian

322-1392



Living 1392 SQ FT
Garage 446 SQ FT
Entry 27 SQ FT
Total 1865 SQ FT

Copyright Mike Munz Construction, Inc.
This brochure is for illustrative purposes only and not part
of a legal contract. Floor plans, dimensions, specifications
and price are subject to change without notice.
Room sizes are approximate.

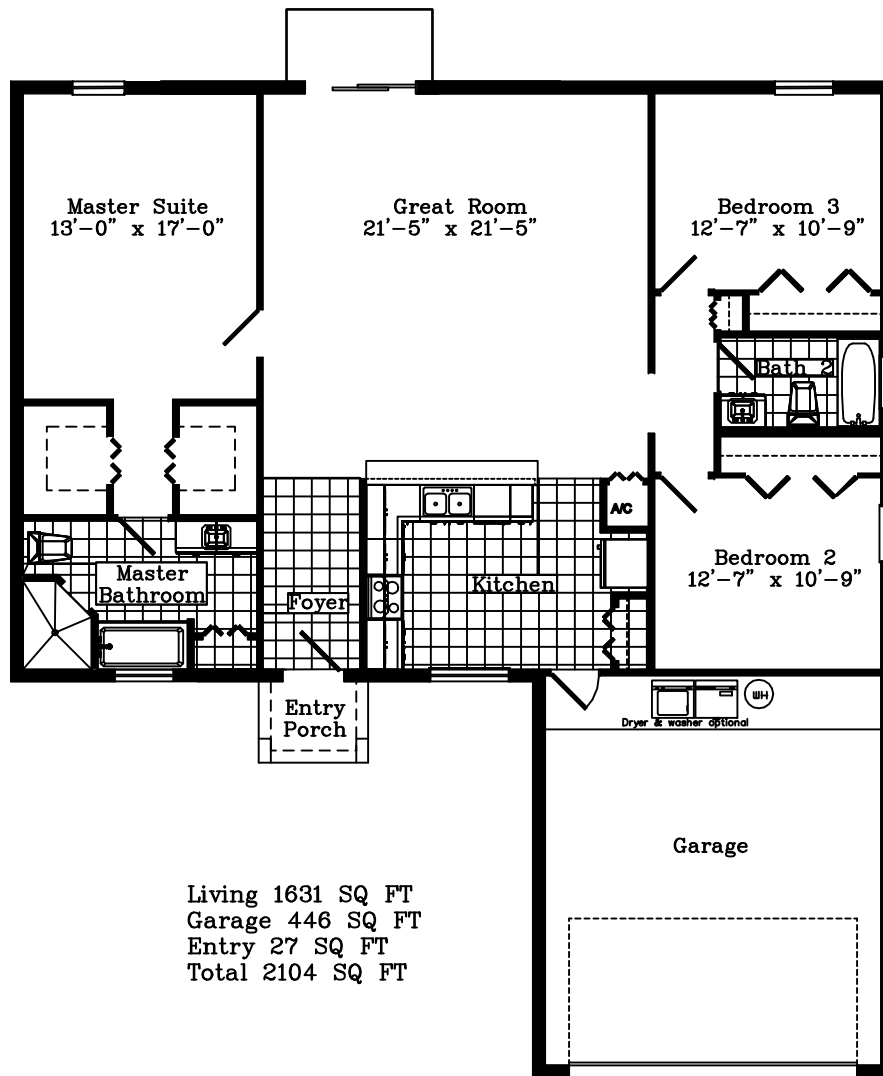
www.mikemunz.com



Mike Munz
Construction, Inc.
CGC037714 CPC053906 CCC056805

The Floridian

322-1631

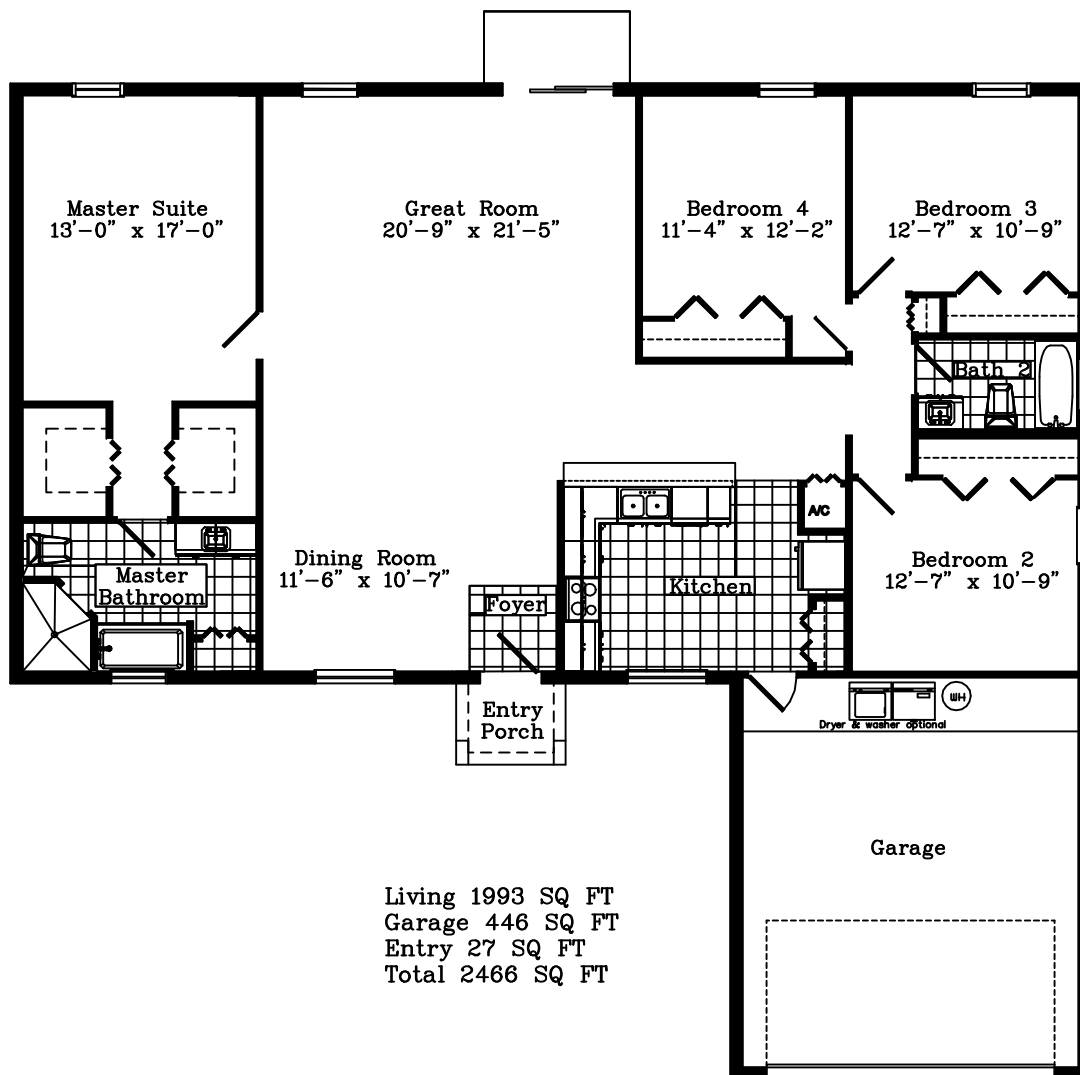


Living 1631 SQ FT
Garage 446 SQ FT
Entry 27 SQ FT
Total 2104 SQ FT

Copyright Mike Munz Construction, Inc.
This brochure is for illustrative purposes only and not part
of a legal contract. Floor plans, dimensions, specifications
and price are subject to change without notice.
Room sizes are approximate.

www.mikemunz.com





Copyright Mike Munz Construction, Inc.
This brochure is for illustrative purposes only and not part
of a legal contract. Floor plans, dimensions, specifications
and price are subject to change without notice.
Room sizes are approximate.

www.mikemunz.com





**Mike Munz
Construction, Inc.**
CGC037714 CPC053906 CCC056805

GENERAL FEATURES

- ★ *Permits & impact fees*
- ★ *One year full Warranty on labor and materials*
- ★ *Water and sewer connection allowance*
- ★ *Self-sealing class-A fire rated fungus resistant fiberglass shingles*
- ★ *Insulated fire rated garage entry door from living area with weather stripping*
- ★ *Termite soil poisoning treatment*
- ★ *Six mil. Visqueen under all concrete floors*
- ★ *Finished garage walls*
- ★ *Plans with in house design*
- ★ *Covered metal roof valley*
- ★ *Certified construction surveys*
- ★ *Pre-occupancy walk through inspection*
- ★ *Attic light with switch*
- ★ *Two GFI utility electrical outlets in garage*
- ★ *200 AMP electrical service*
- ★ *CBS stucco homes have stucco and concrete block perimeter walls with steel tie beam over columns tied to slab*
- ★ *Professionally engineered roof trusses with hurricane clips & straps for added protection*
- ★ *5/8" 4-ply roof sheathing*
- ★ *Pre-wired for automatic garage door opener*
- ★ *Concrete patio per plan*
- ★ *50 gallon rapid recovery water heater*
- ★ *Garage ceiling lights*
- ★ *Garage per plan*
- ★ *Custom sized air conditioner*
- ★ *House engineering and architecture*

EXTERIOR FEATURES

- ★ *CBS – architecturally designed stucco decoration*
- ★ *White window frames*
- ★ *Insulated windows*
- ★ *Exterior lights by all exterior entry doors*
- ★ *Patio lights per plan*
- ★ *Garage door side carriage light*
- ★ *Landscape package for 10,000sf lot. Includes sod,*
- ★ *four indigenous trees and 15 - 3 gallon shrubs.*
- ★ *All exterior beams concrete and steel*
- ★ *Metal hurricane panels*
- ★ *Covered entry per plan*
- ★ *Patios and decks per plan*
- ★ *Paneled garage door with hurricane reinforcement bars*
- ★ *Two exterior faucets*
- ★ *Two exterior water protected GFI electrical outlets*
- ★ *6" in 12" roof slopes for a richer architectural look*
- ★ *Designer Service on color schemes*
- ★ *Concrete: 45' driveway, patio, porch, stoops, and equipment pads*

Date

Date

Mike Munz

Date



**Mike Munz
Construction, Inc.**
CGC037714 CPC053906 CCC056805

INTERIOR FEATURES

- ★ *Vaulted, volume, and tray ceilings per plan*
- ★ *All ceilings have hand trowled knockdown finish*
- ★ *Interior framing: wood and metal*
- ★ *Colonial paneled doors*
- ★ *Choice of interior trim paint color*
- ★ *Dead bolt locks on exit doors*
- ★ *Door handles with privacy locks*
- ★ *Colonial bifold closet doors*
- ★ *Light orange peel textured wall primer*
- ★ *Bathroom wall mirrors and medicine cabinets*
- ★ *Pull down Attic Stairs with light fixture in attic*
- ★ *Tile in kitchen, foyer, and all bathrooms*
- ★ *Ventilated vinyl coated steel shelving in all closets*
- ★ *1 pre-wired phone outlets, 3 pre-wired TV outlets and 4 or more pre-wired fan outlets according to model*
- ★ *Single handle faucets*
- ★ *Elongated toilets*
- ★ *Shower in master bathroom. Available with opt. tub*
- ★ *Porcelain bathtub in guest bathroom*
- ★ *Baths: tile in shower and tub alcove walls*
- ★ *Bedroom outlets are AFCI protected*
- ★ *Bathroom and garage outlets are GFI protected*
- ★ *Dura-Rock wallboard in bath wet areas*
- ★ *Shaker style bathroom vanities*
- ★ *Hallway lights per plan*
- ★ *Wall to wall carpet*
- ★ *Painted Base board, casing and doorstops*
- ★ *Marble window sills*

KITCHEN FEATURES

- ★ *21cf. refrigerator*
- ★ *Dishwasher*
- ★ *Range*
- ★ *Multi-speed range hood vent with light*
- ★ *Chrome kitchen faucet with side sprayer*
- ★ *Stainless steel sink*
- ★ *Shaker style cabinets*
- ★ *Mica kitchen counter tops*
- ★ *Tile flooring*
- ★ *Pantry per plan*
- ★ *Breakfast bar per plan*
- ★ *GFI electrical outlets*

Date

Mike Munz Date

Date



**Mike Munz
Construction, Inc.**
CGC037714 CPC053906 CCC056805

ENERGY SAVING FEATURES

- ★ *High efficiency A/C with variable speed air handler*
- ★ *Low E windows to cut down radiation*
- ★ *R-30 ceiling insulation*
- ★ *R-13 frame wall insulation*
- ★ *R-4.1 block wall insulation*
- ★ *R-15 insulated entry doors with weather strip*
- ★ *R-6 insulation in A/C ducts in unconditioned space*
- ★ *Return air in conditioned space*
- ★ *Bath exhayst vents per plans*
- ★ *Rapid recovery energy-miser hot water heater*
- ★ *Insta-seal applied to over 50 locations to greatly reduce air infiltration*
- ★ *Baffles to prevent ceiling insulation from blocking soffit vents*
- ★ *Electrical boxes sealed*
- ★ *Duct, pipe and wire openings from conditioned to non-conditioned spaces sealed*
- ★ *Insulation cut around electrical boxes for fit not compression*
- ★ *Vented soffits*
- ★ *Windows, doors and bottom sills caulked to block air and water intrusion*
- ★ *Insulated and weather stripped attic access if in A/C space*

LOT PREPARATION

LOT PREPARATION IS NOT INCLUDED

- ★ *Clearing of lot 1/4 acre*
- ★ *Grading for above mentioned activities and to provide positive drainage.*
- ★ *Building house pad with soil compaction test*
- ★ *Plastic swale liner for drainage on 80' wide lot*
- ★ *Compaction of building pad to approved density*
- ★ *Temporary and Final Culvert*

Date

Mike Munz Date

Date
