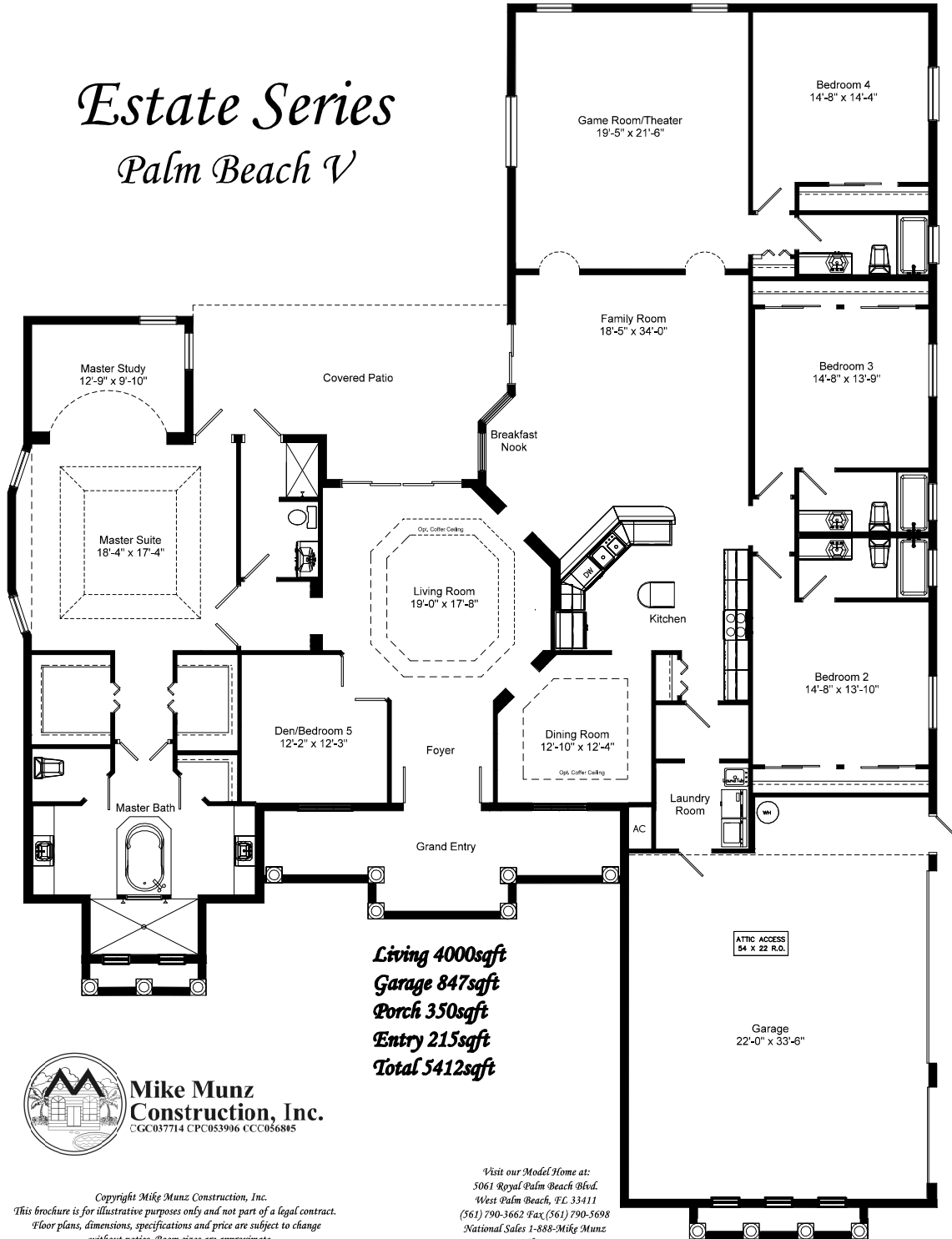


Estate Series

Palm Beach V



Living 4000sqft
Garage 847sqft
Porch 350sqft
Entry 215sqft
Total 5412sqft



Mike Munz Construction, Inc.
 CGC037714 CPC053906 CCC056805

Copyright Mike Munz Construction, Inc.
 This brochure is for illustrative purposes only and not part of a legal contract.
 Floor plans, dimensions, specifications and price are subject to change
 without notice. Room sizes are approximate.

Visit our Model Home at:
 5061 Royal Palm Beach Blvd.
 West Palm Beach, FL 33411
 (561) 790-3662 Fax (561) 790-5698
 National Sales 1-888-Mikg Munz
 www.mikgmunz.com